

Fiche de procédure

Installation de Veeam Backup and Replication

Cette fiche de procédure détaille le processus d'installation de Veeam Backup and Replication sur une machine.

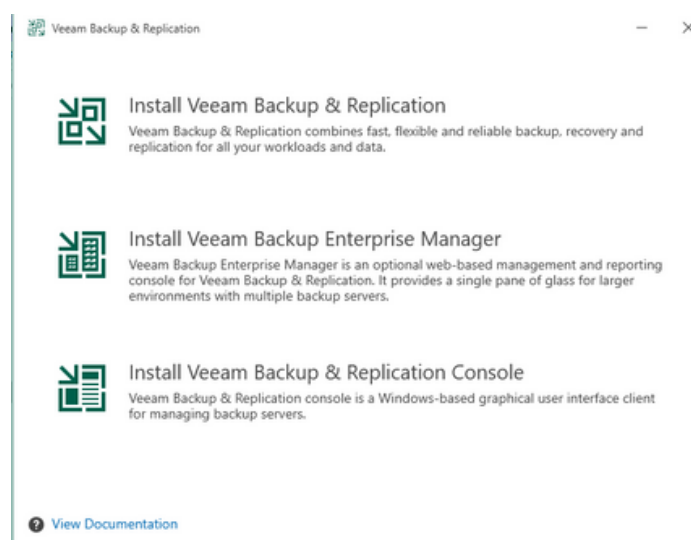


Backup & Replication™

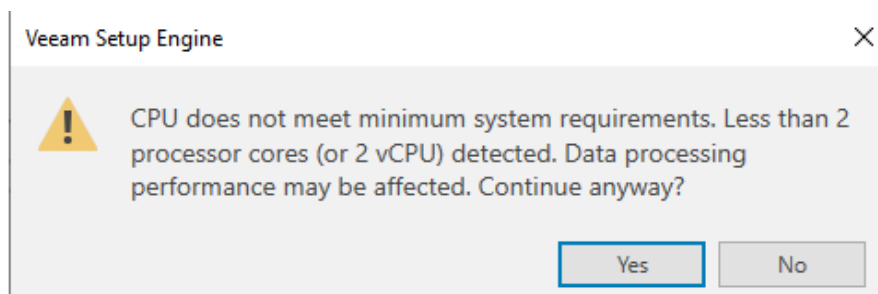
Installation de Veeam Backup and Replication

La présente fiche de procédure a pour objectif de guider l'installation du logiciel Veeam Backup et Replication 12.1

- Lancer le fichier et l'installation.
- Sélectionner la version “ Veeam Backup and Replication” .

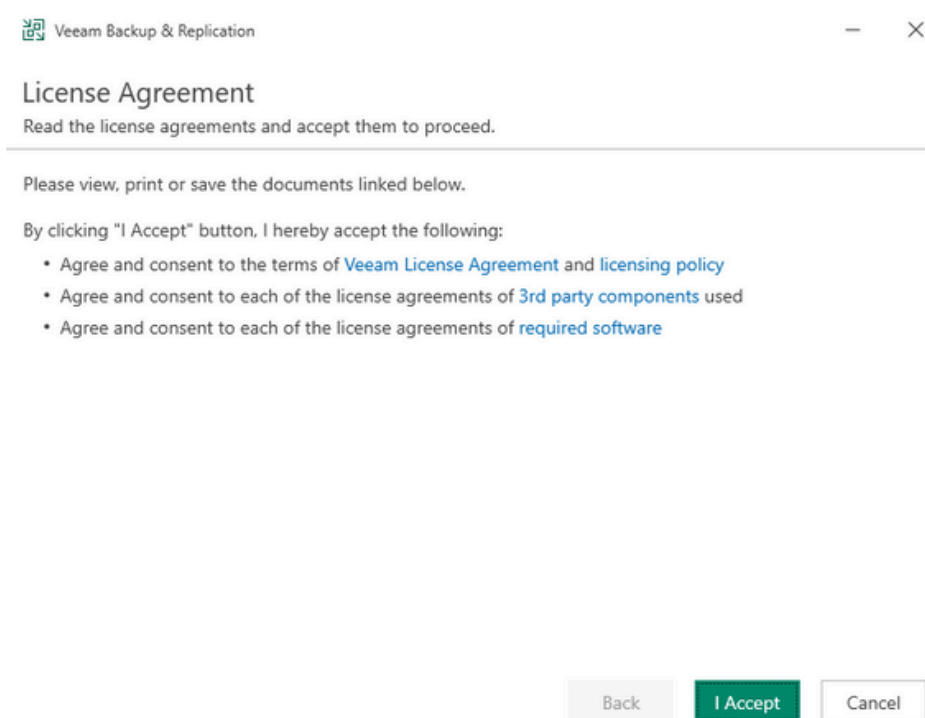


- Accepter l'invertissement.

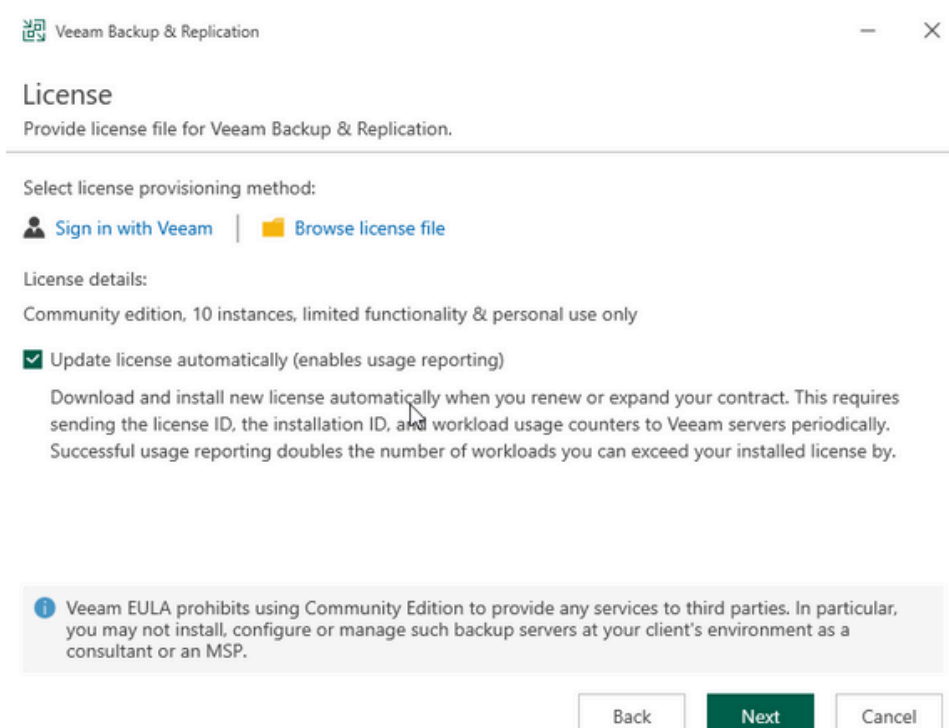


Installation de Veeam Backup and Replication

- **Accepter le contrat de licence.**

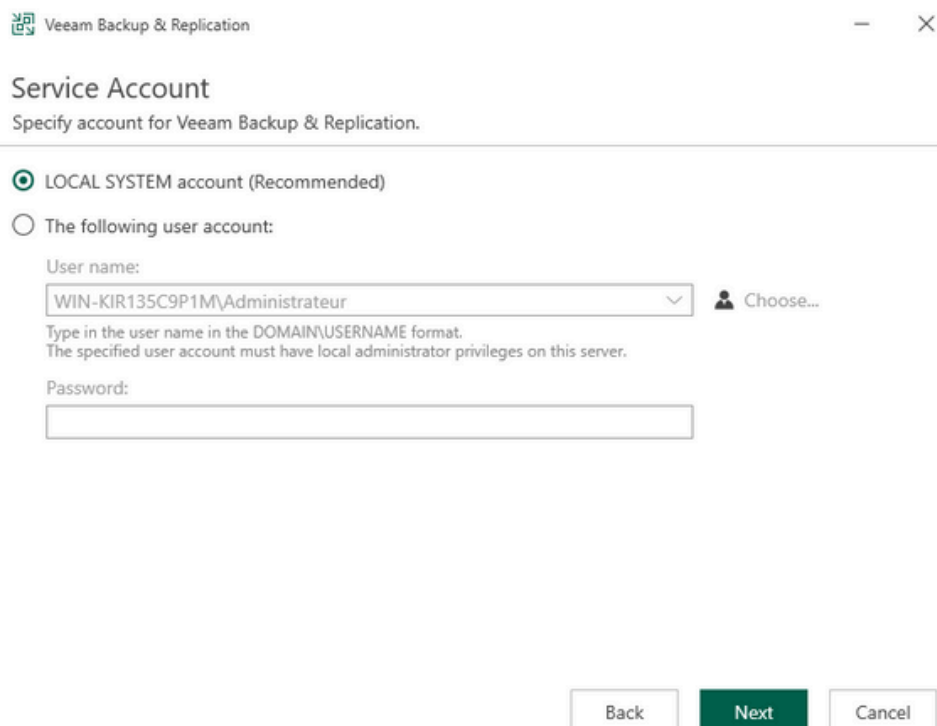


- **Ne pas décocher la case et continuer.**



Installation de Veeam Backup and Replication

- Dans la gestion des compte laisser les configuration de base.



Veeam Backup & Replication

Service Account

Specify account for Veeam Backup & Replication.

LOCAL SYSTEM account (Recommended)

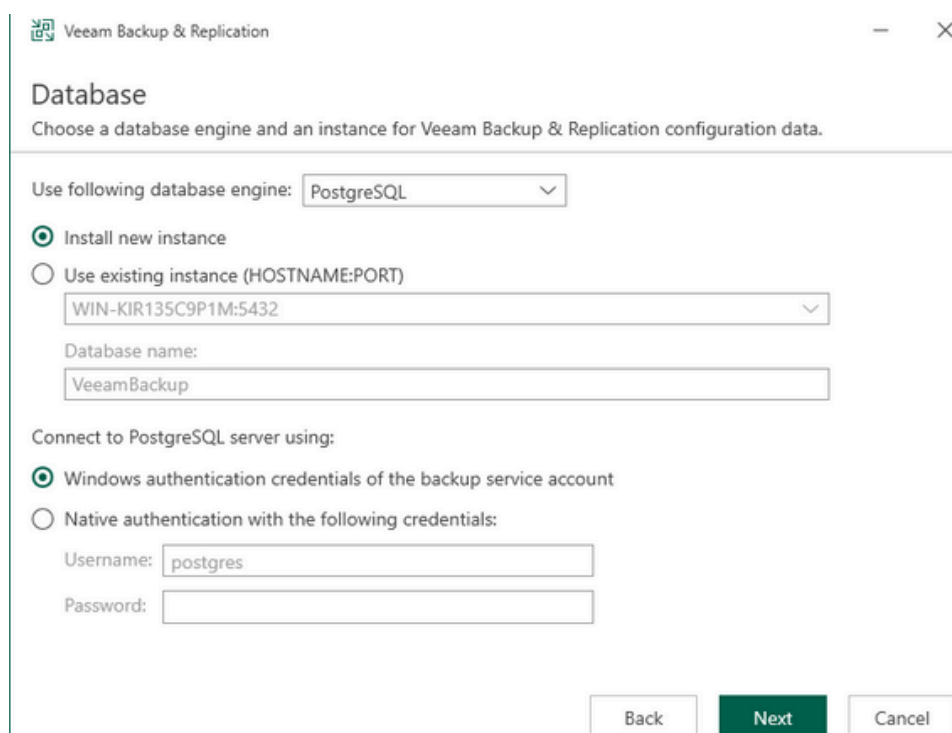
The following user account:

User name:
WIN-KIR135C9P1M\Administrateur Choose...

Type in the user name in the DOMAIN\USERNAME format.
The specified user account must have local administrator privileges on this server.

Password:

- Faites de même avec la base de données et continuer.



Veeam Backup & Replication

Database

Choose a database engine and an instance for Veeam Backup & Replication configuration data.

Use following database engine: PostgreSQL

Install new instance

Use existing instance (HOSTNAME:PORT)

WIN-KIR135C9P1M:5432

Database name:
VeeamBackup

Connect to PostgreSQL server using:

Windows authentication credentials of the backup service account

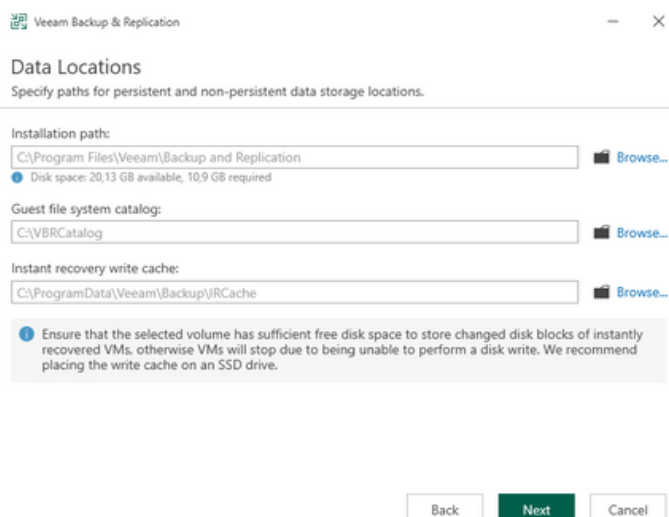
Native authentication with the following credentials:

Username: postgres

Password:

Installation de Veeam Backup and Replication

- Cliquez sur suivant et un message d'investissement apparaîtra, accepter ce message. .



Veeam Backup & Replication

Data Locations

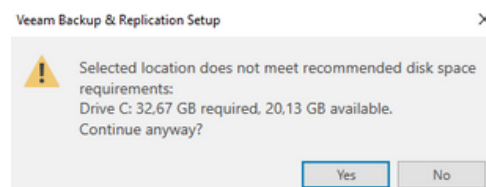
Specify paths for persistent and non-persistent data storage locations.

Installation path:
C:\Program Files\Veeam\Backup and Replication
Disk space: 20,13 GB available, 10,9 GB required

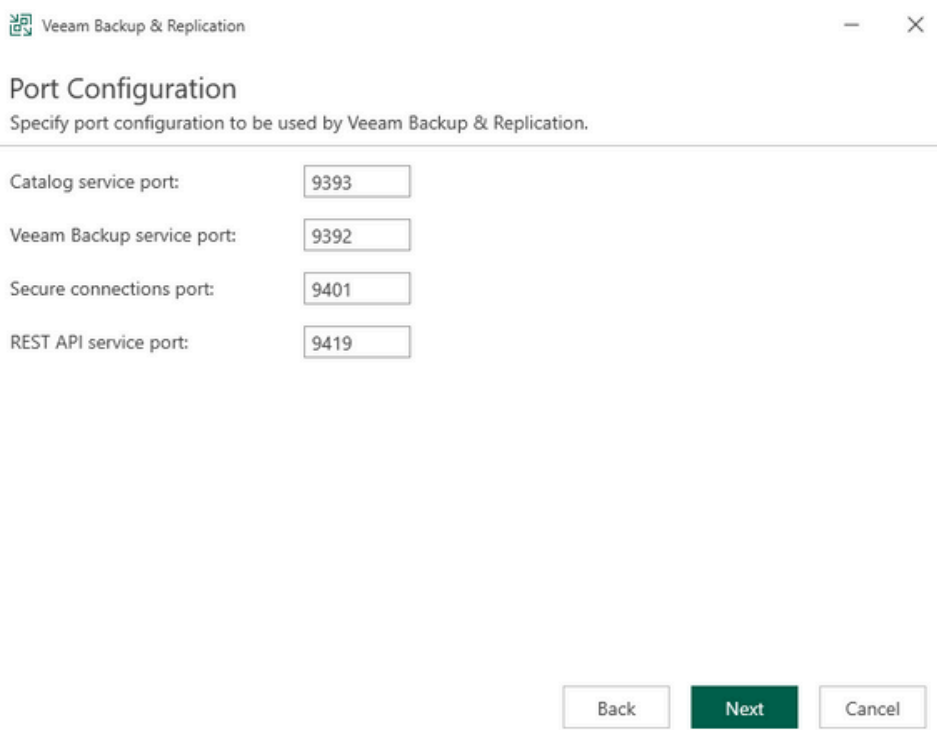
Guest file system catalog:
C:\VBRCatalog

Instant recovery write cache:
C:\ProgramData\Veeam\Backup\IRCache

Ensure that the selected volume has sufficient free disk space to store changed disk blocks of instantly recovered VMs, otherwise VMs will stop due to being unable to perform a disk write. We recommend placing the write cache on an SSD drive.



- Laisser les port par default. .



Veeam Backup & Replication

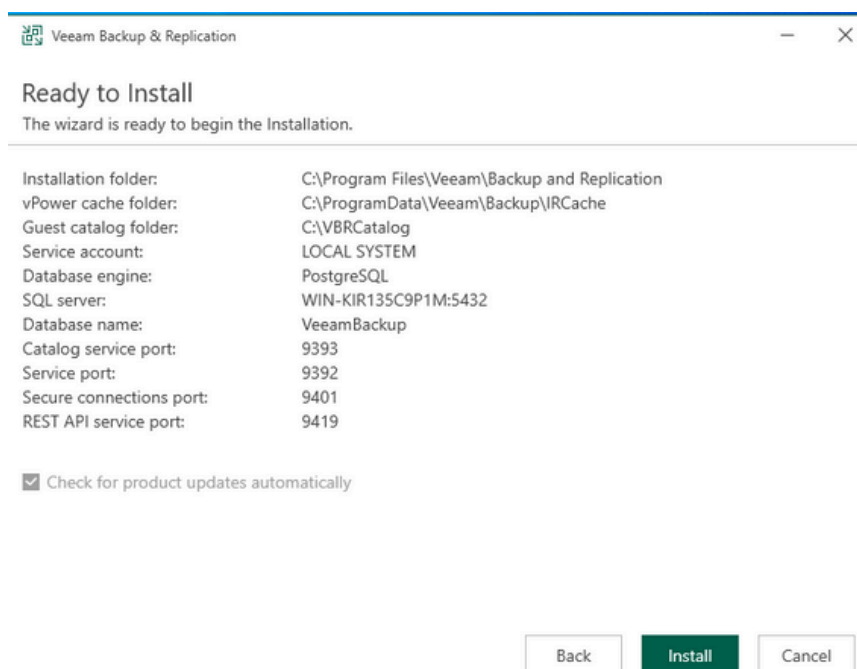
Port Configuration

Specify port configuration to be used by Veeam Backup & Replication.

Catalog service port:	<input type="text" value="9393"/>
Veeam Backup service port:	<input type="text" value="9392"/>
Secure connections port:	<input type="text" value="9401"/>
REST API service port:	<input type="text" value="9419"/>

Installation de Veeam Backup and Replication

- Il est prêt à être installé, cliquez sur "install".



- Felicitation Veeam Backup and Replication est installé !

