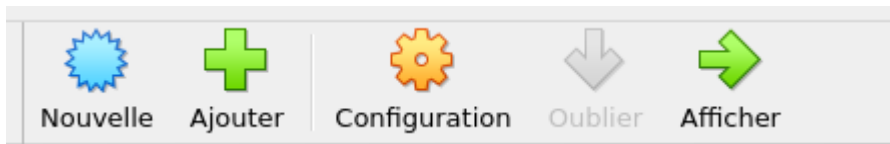
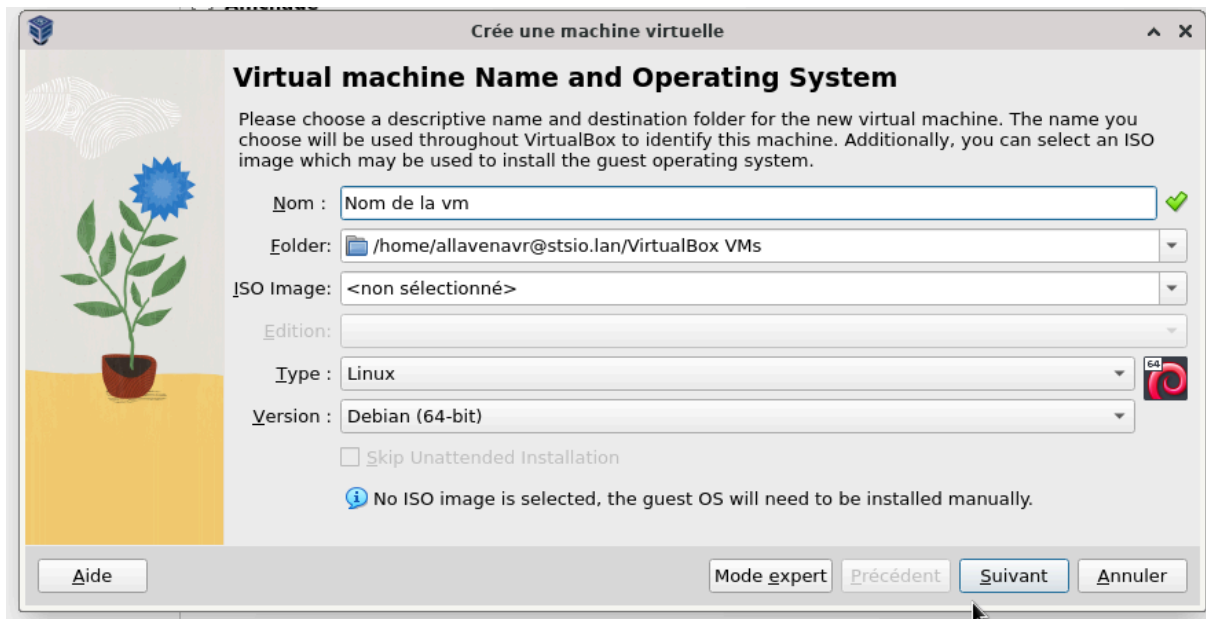


Lancer Virtual box

Nouvelle :



Mettre le nom de la vm et le type de vm (linux /windows) (debian 64bits)

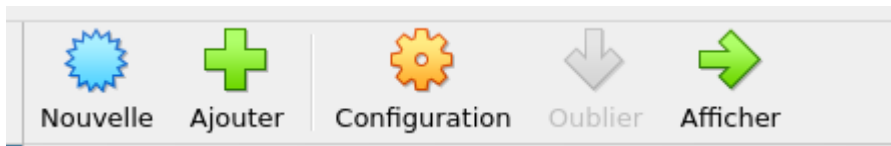


Do not had a virtual disk :

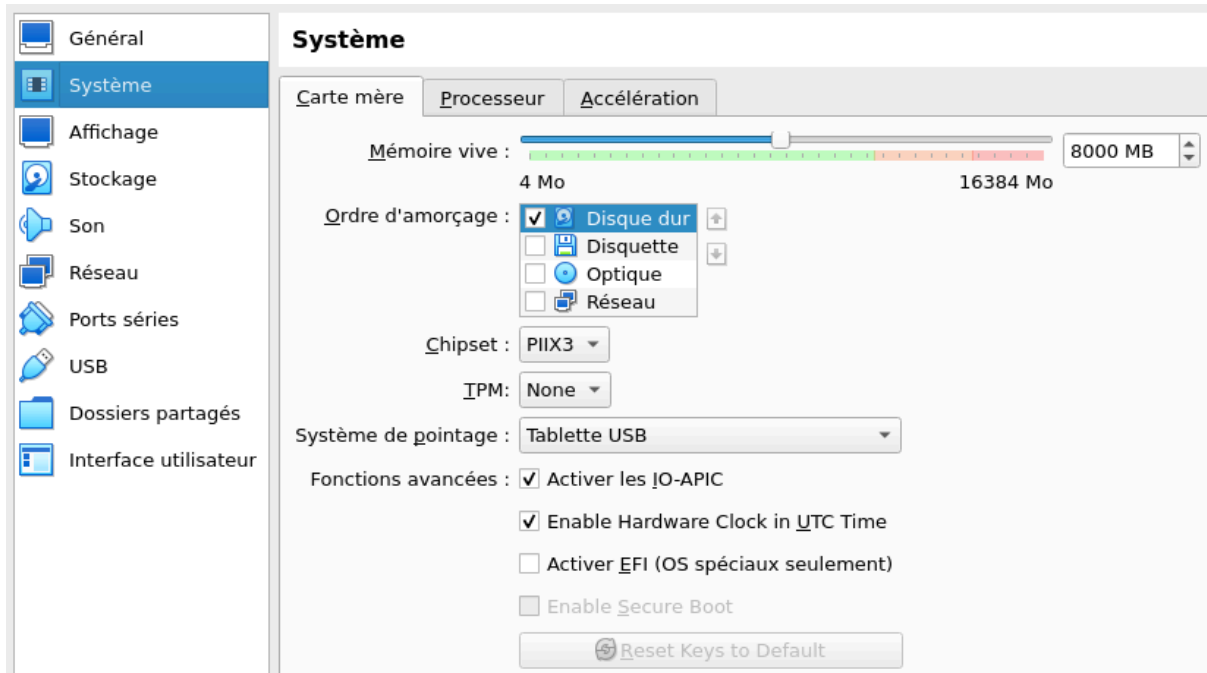


Finish

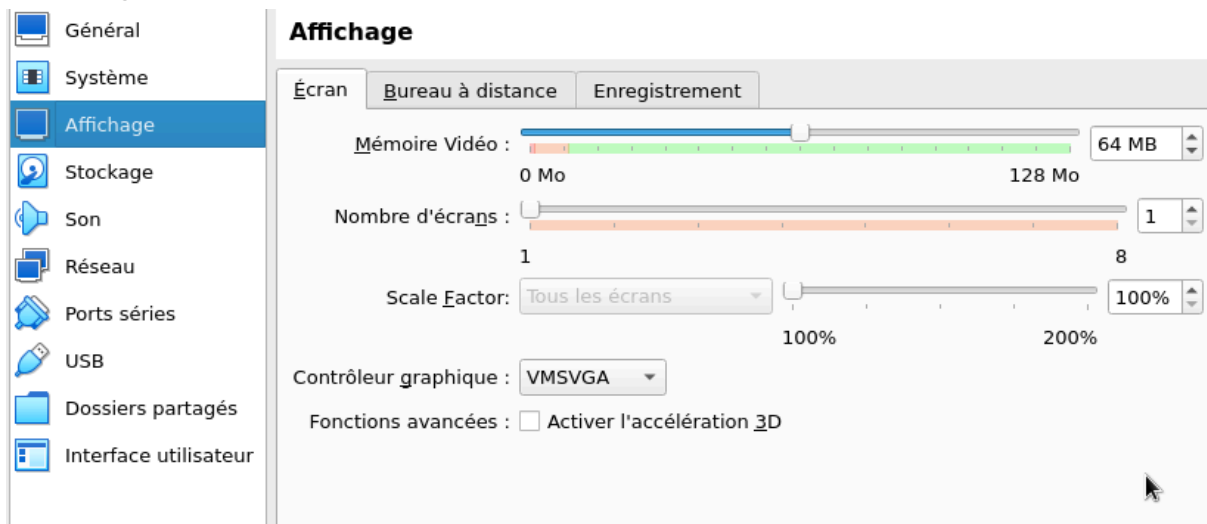
Configuration :



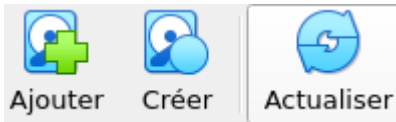
Système : virer disquette et remonter disque dur



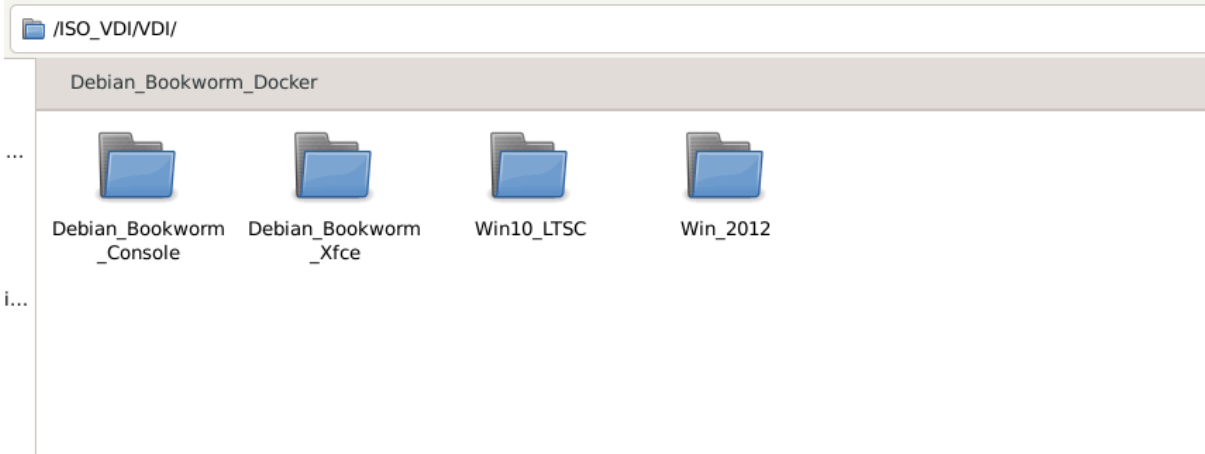
Affichage mettre 64 mémoire vidéo :



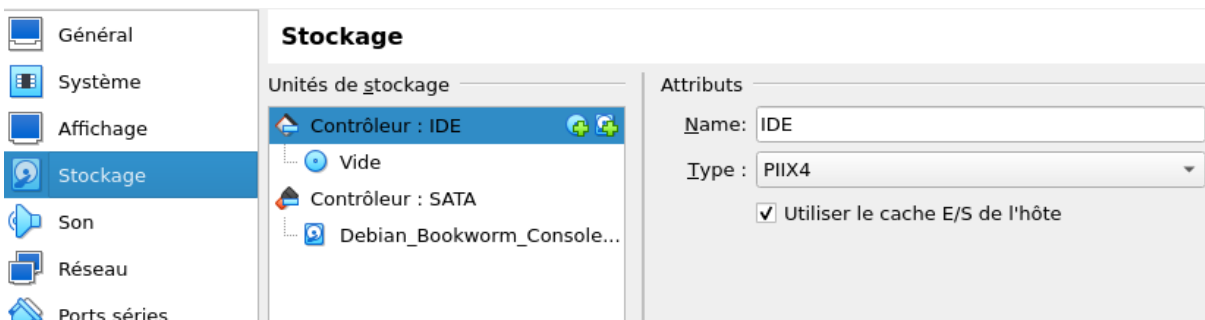
Stockage SATA → disque dur → Ajouter :



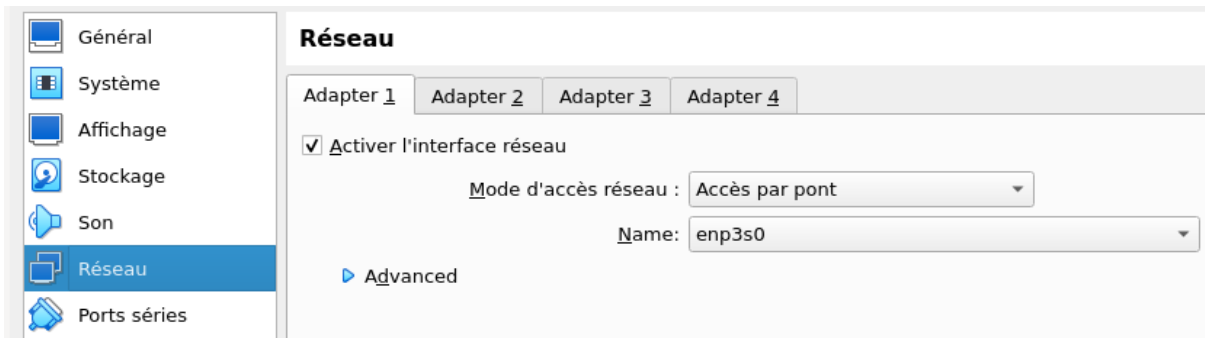
Récupérer .vdi



Valider



Réseau mettre le bon mode (par pont / nat ...)



Globalement c bon

Les codes de login sont avec les .vdi